

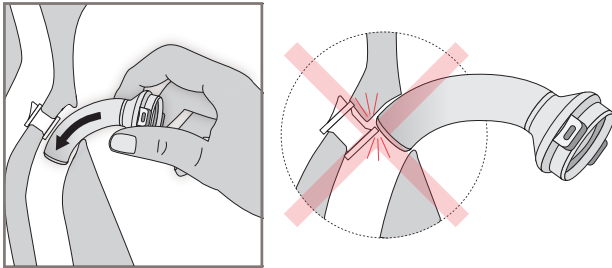
Bedside Quick Reference for Provox® Life™ Laryngectomy Pulmonary Kits

ALWAYS consult the Instructions For Use for EACH product for complete details.

How to place Provox® Life™ LaryTube™

- If needed, lightly lubricate LaryTube with water soluble lubricant* and gently slide LaryTube into the stoma.
- If a voice prosthesis (VP) is in place, use caution. Direct LaryTube in and down to avoid catching the VP with the end of LaryTube to prevent dislodgement.

*KY Jelly®, SurgiLube® and Xylocaine® (lidocaine).

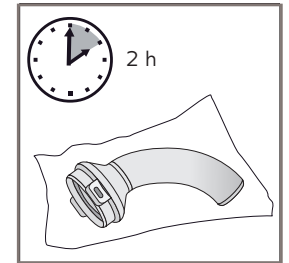
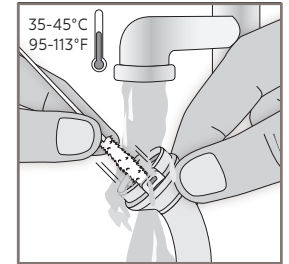


When and How to clean Provox® Life™ LaryTube™

- Clean before each use, whenever dirty and/or when mucus collects in LaryTube.
- DO NOT clean the device while inside the stoma.
- At minimum, clean and disinfect LaryTube at least once per day.

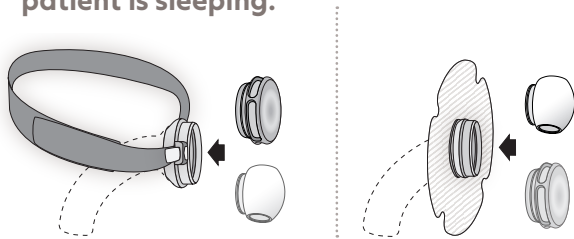
1. Clean LaryTube under running water with Provox TubeBrush.
2. The holes of a fenestrated LaryTube should be cleaned with Provox Brush.
3. Rinse LaryTube, TubeBrush and Brush with water.*
4. Soak LaryTube in 50-60°C /122-140°F water-based, mild soap solution for 15 minutes.
5. Rinse with 35-45°C /95-113°F water.*
6. Disinfect at least once a day with one of the following methods:
 - a. Ethanol 70% for 10 minutes
 - b. Isopropyl alcohol 70% for 10 minutes
 - c. Hydrogen peroxide 3% for 60 minutes
7. Let LaryTube dry at least for 2 hours or until it looks dry.

*Sterile water may be used for cleaning and rinsing.



When to use Provox® Life™ HME

- Use an HME day and night even while the patient is sleeping.



When to change Provox® Life™ HME

- Use Provox Life™ Home HME during the day. Prior to sleeping, change the HME to Provox Life™ Night HME.
- Change the HME when patient complains about increased breathing resistance which may occur if the HME becomes saturated with mucus.
- All HMEs should be changed AT LEAST every 24 hours or more often as needed.

NOTE:
DO NOT
rinse the HME.

This text does not replace or represent the complete contents of the Instructions For Use (IFU) and/or Prescriber Information for the products in this text. Therefore, before prescribing and/or using any of the products included in this text, please review the entire contents of the respective IFU and/or Prescriber Information.

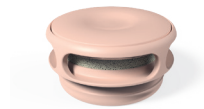


TOTAL NECK BREATHER

TOTAL LARYNGECTOMY



Heat and Moisture Exchanger (HME) In Use



Provox® Life™
Home HME



Provox® Life™
LaryTube™



Provox® Life™
Night HME

DO NOT PLACE EXTERNAL HUMIDIFIER OVER HME!